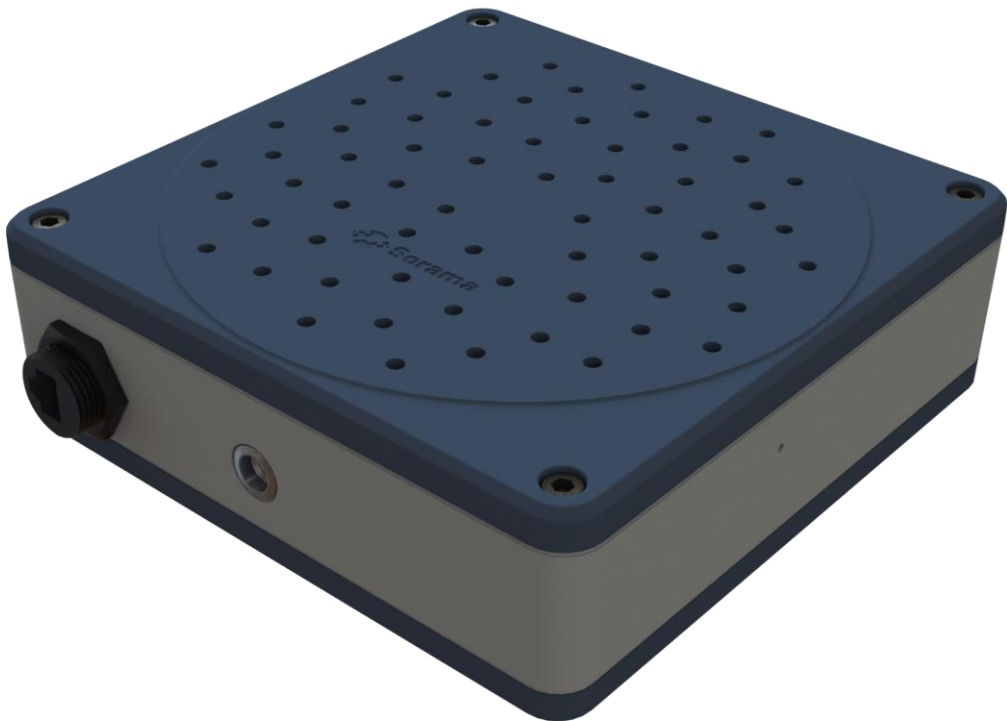




Sorama
make sound insightful

SORAMA L642 & L642V Specification sheet v1.2



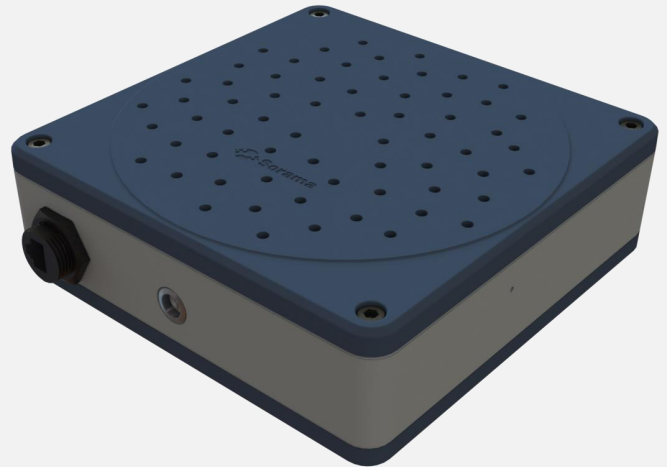
SORAMA L642 & L642V

The Sorama L642 is the evolution in acoustic monitoring solutions. It combines the powerful use of acoustic imaging, Class 1 performing detection of sound levels, accurate localization and interpretation. Advanced sound interpretation is generally split up in specific (deep-learned) classification as well as anomaly detection. The Sorama L642 supports AI edge computing as well as server-based solutions, all powered and connected with one single network cable.

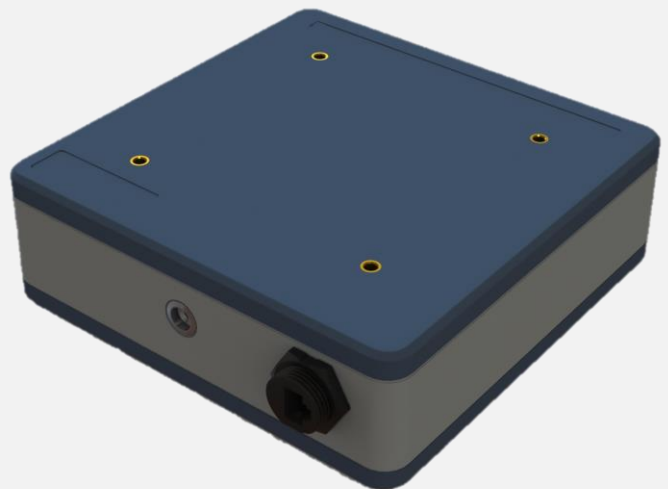
The Sorama L642 can be used in a variety of application fields: safety & security, mobility and environmental monitoring. The acoustic monitors can be easily connected to cover larger areas with secure and GDPR proof data handling.

Features include:

- All in one acoustic monitoring
- Class 1 performing Environmental noise monitoring
- Acoustic anomaly detection
- Vehicle classification and tracking
- City Safety classifiers
- Visual light camera integrated (L642V)
- Sound intensity mapping



Front view



Back view

SORAMA L642(+) & L642V(+)

Class 1 SPL meter performing Scalable and High-end 24/7 acoustic imaging

64-Digital MEMS microphones placed in a **Sunflower Array**

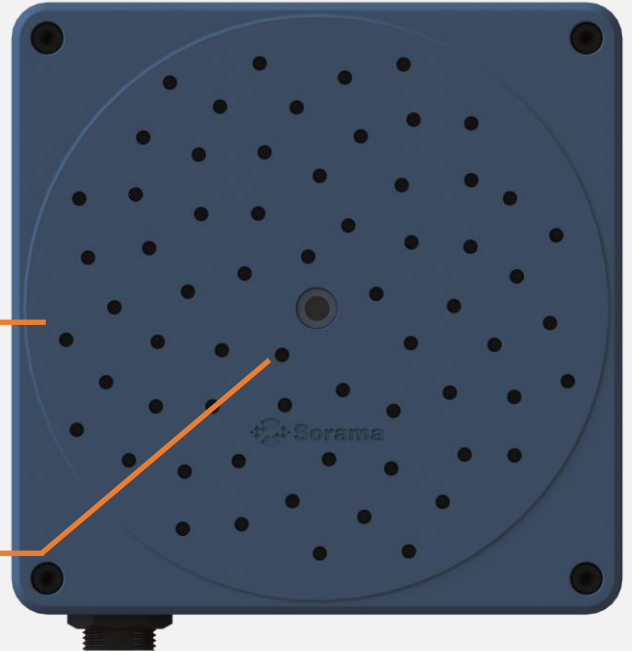
Integrated visual Light camera on V & V+ model

On board **localization and classification** of sounds

Ease of integration trough **Listener Platform API**

No additional server hardware required due to **Powerful Edge Processing**

Ease of installation via **one IP66 RJ45 connector and Vesa 10 mounting**



Front view



Back view

Physical Properties

Size	170 x 170 x 65 mm	LxWxD
Weight	0.85 kg	1.7Lb
Power	PoE(+) port 100-240V AC, max 25W IEEE 802.3af for L642 and L642v IEEE802.3at for L642+ and L642v+	Status LED (initial install)

System Integration

API	Open HTTP REST	
Event Triggers	dB SPL Threshold	and classifiers
Event Actions	Recording to server(edge) storage	Acoustic soundmap overlay stored seperately for editing&analysis
Classifiers	Acoustic Anomaly detection, Vehicle (car, truck tractor)	City Safety (gunshot, aggression, breaking glass)

Camera (L642V and L642V+)

Integrated visible light	Fixed Lens
Resolution video	720x1280 or 1920x1080 (still image)
Camera Resolution	720p at 60fps
Camera Field of View	65° ±3°

Microphones

Type	MEMS	Digital Bottom Port
SNR (A-weighted, at 1 kHz)	64 dB for 94 dB SPL	@ 1kHz
Sensitivity	-26 dBFS +/- 1.5dB	At 1 kHz, 94 dB SPL
Acoustic Overload Point	120 dB SPL	At 1 kHz, <10% THD

General

Ingress protection	IP54
Operating temperatures	-30 °C to 50 °C (-22 °F to 122 °F)
Warranty	2-year

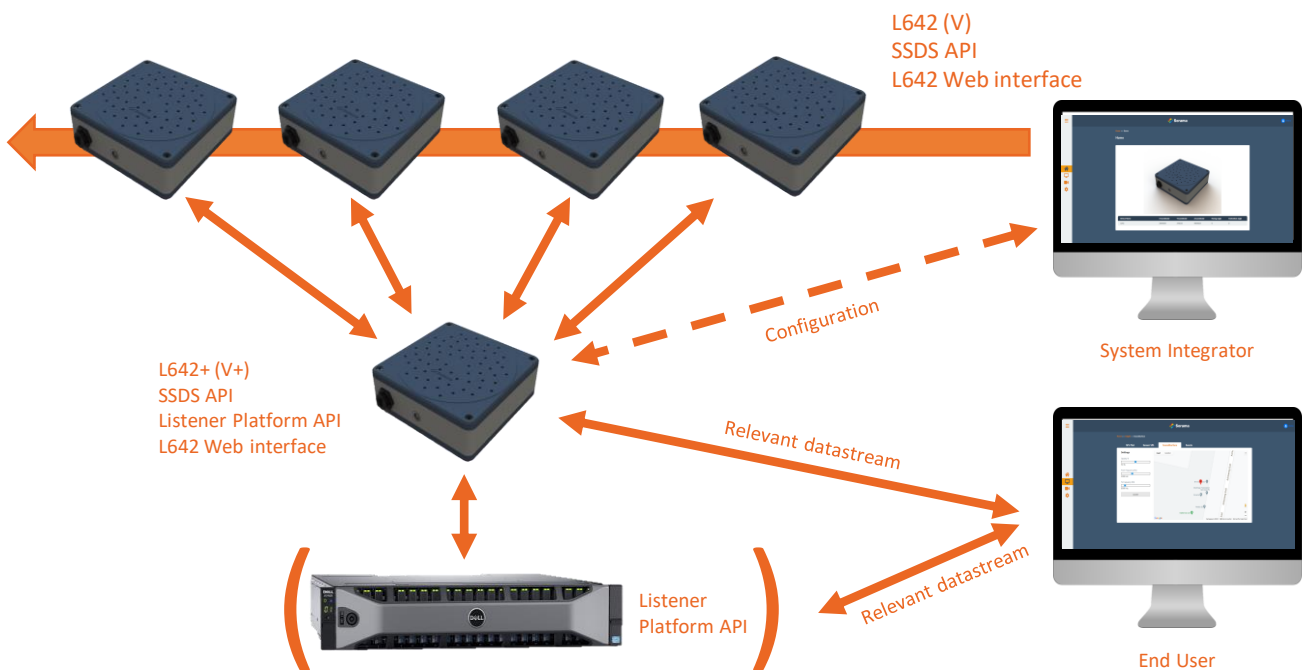
Compliance

EMC	EN55032:2015	FCC Title 47.Part 15
	EN61000-4-2:2009	
	EN61000-4-3:2006	
	EN61000-4-4:2012	
	EN61000-4-5:2006	
	EN61000-4-6:2009	
	EN61010-1:2010	

Data Formats

Audio	.wav (audio verification)
Pictures	.jpg .png
Video (v & v+ models)	mjpeg, MP4
Data messages	JSON format

System Setup



Technical drawing and dimensions (in mm)

